



50 years
1971-2021
WHITE HOUSE
Tennessee



**GERALD HERMAN, City Administrator
City of White House, Tennessee**



NEW BUSINESSES



Auto • Home • Life



Kitchen, Bath & Lighting



Luxe Nails

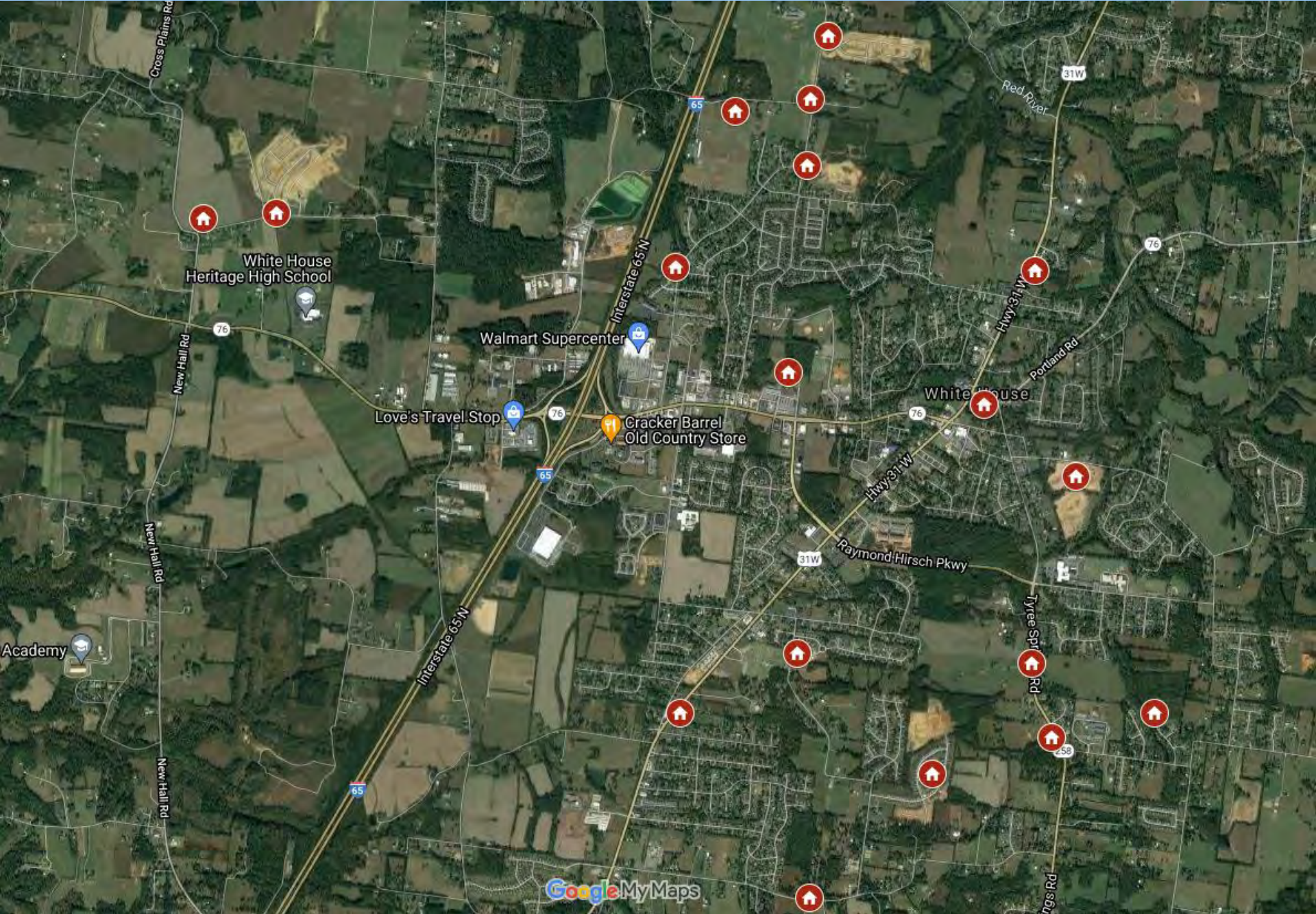
SINGLE FAMILY HOMES



CITY OF WHITE HOUSE

Single Family Permits	
FY 2013	30
FY 2014	50
FY 2015	64
FY 2016	71
FY 2017	86
FY 2018	89
FY 2019	71
FY 2020	193
FY 2021*	286*

SINGLE FAMILY HOMES



APARTMENTS

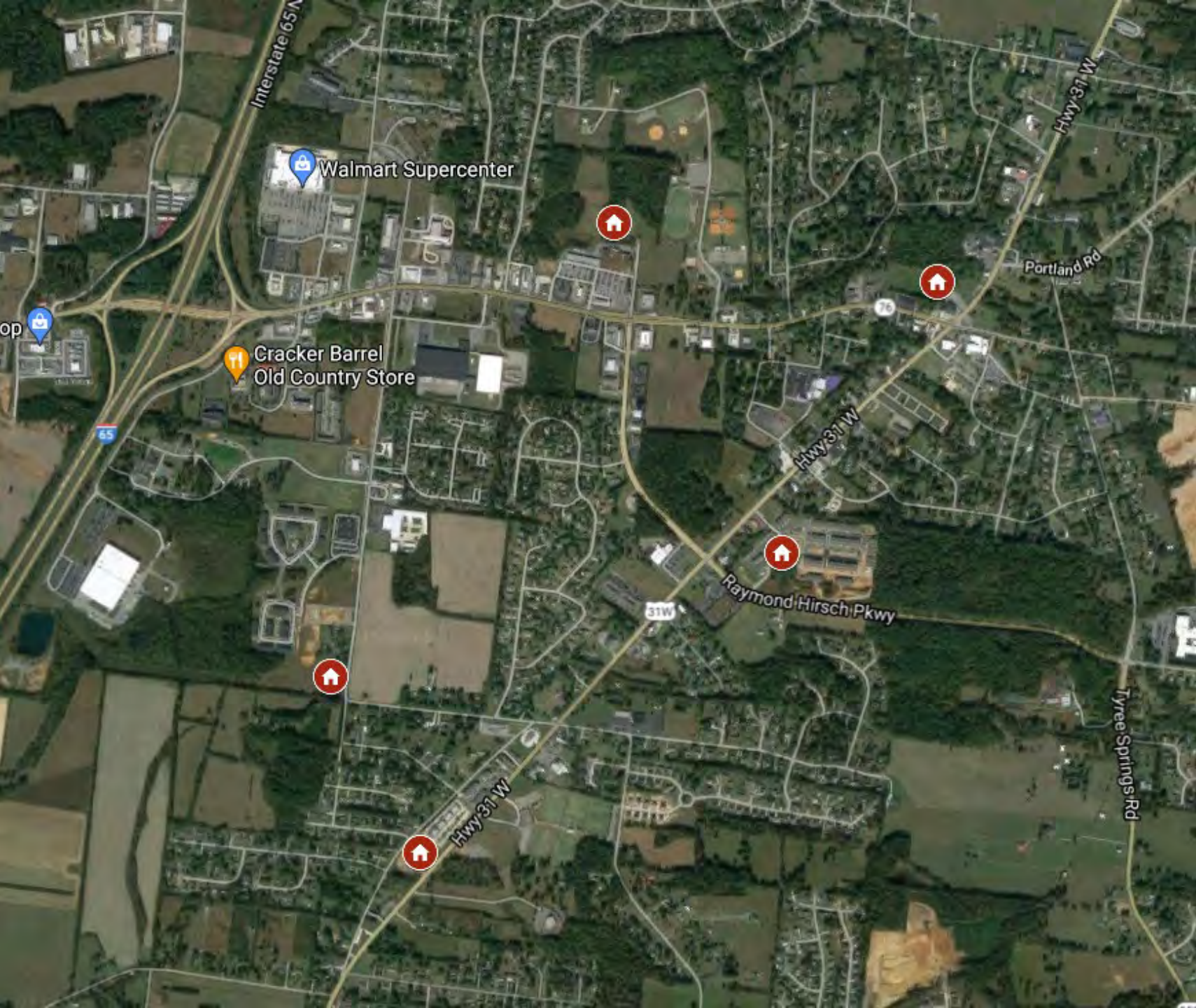


CITY OF WHITE HOUSE

BUILT SINCE 2013

The Grove at Kendell	48 Units
White House Landing	72 Units
The Standard	240 Units
Creekside	40 Units
Twin Springs	301 Units
TOTAL	701 units

CITY OF WHITE HOUSE



APARTMENTS

WASTEWATER TREATMENT PLANT



CITY OF WHITE HOUSE



COMMUNITY EVENT CENTER



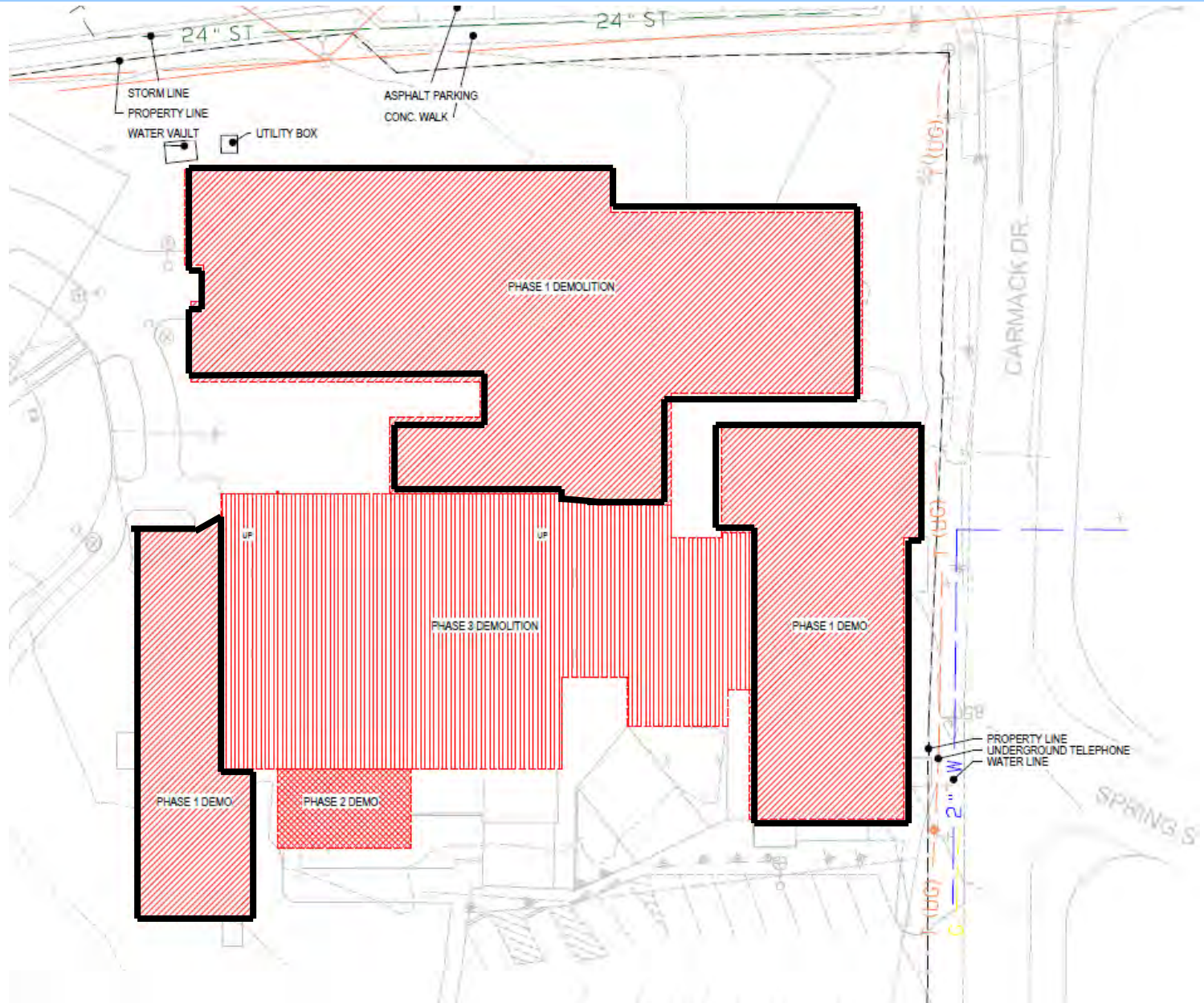
CITY OF WHITE HOUSE



RECREATION CENTER



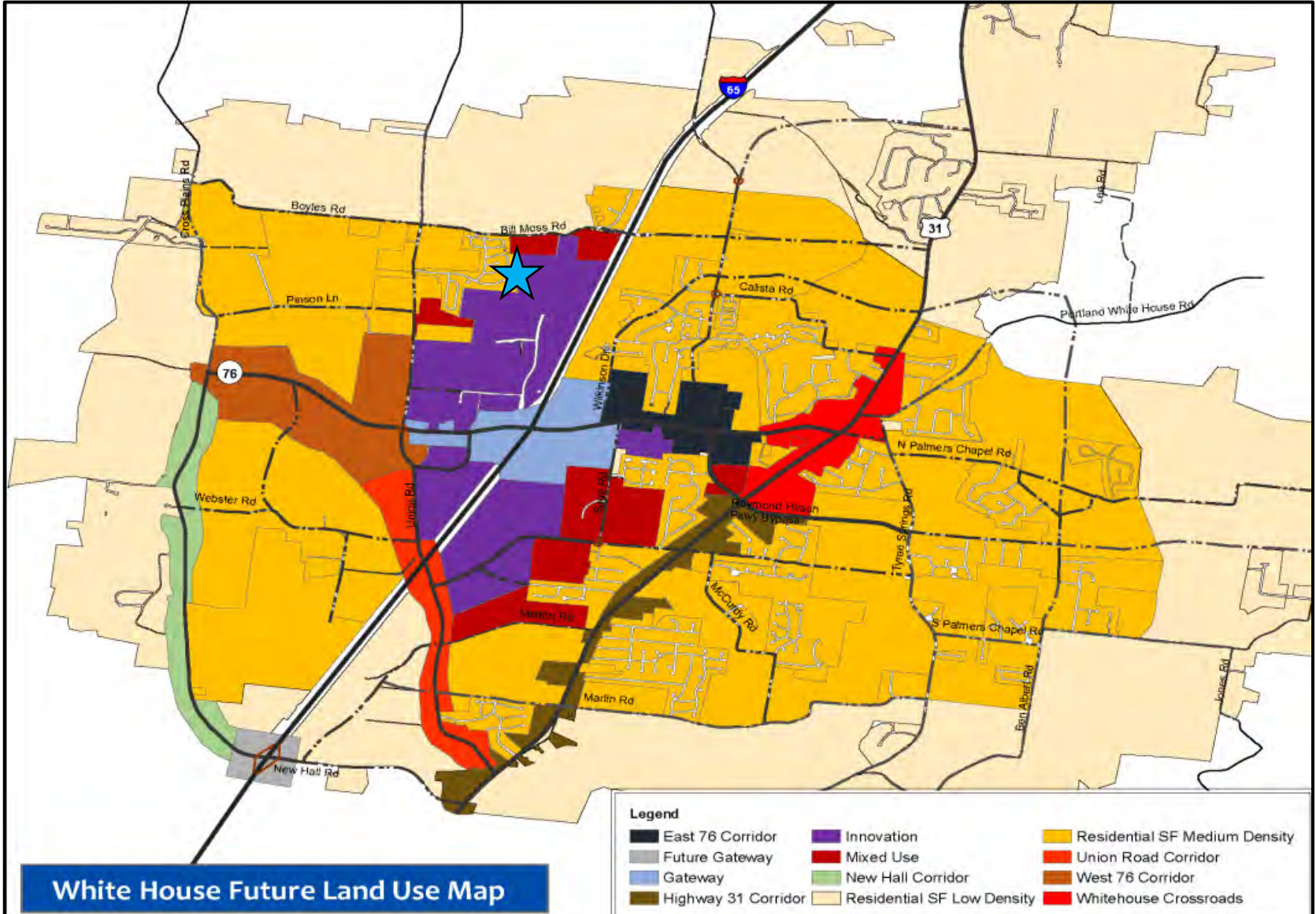
CITY OF WHITE HOUSE



PUBLIC/PRIVATE PARTNERSHIP



Town Center Water Line



CITY OF WHITE HOUSE

PUBLIC/PRIVATE PARTNERSHIP

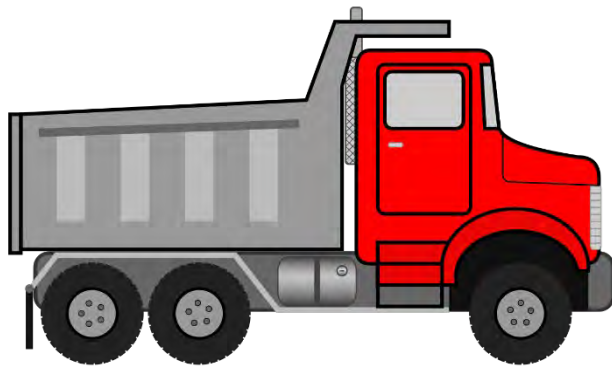


CITY OF WHITE HOUSE



HARPERS WAY

Loves Lane to
Union Rd. connector



Harper's Trucking



STATE/CITY/COUNTY PARTNERSHIP



CITY OF WHITE HOUSE

Future Industrial



31W / SAGE / MCCURDY INTERSECTION



CITY OF WHITE HOUSE



ROAD WIDENING



CITY OF WHITE HOUSE



**North Palmers
Chapel Road**

Sage Road



STATE/CITY PARTNERSHIP



Industrial Drive and SCT Drive

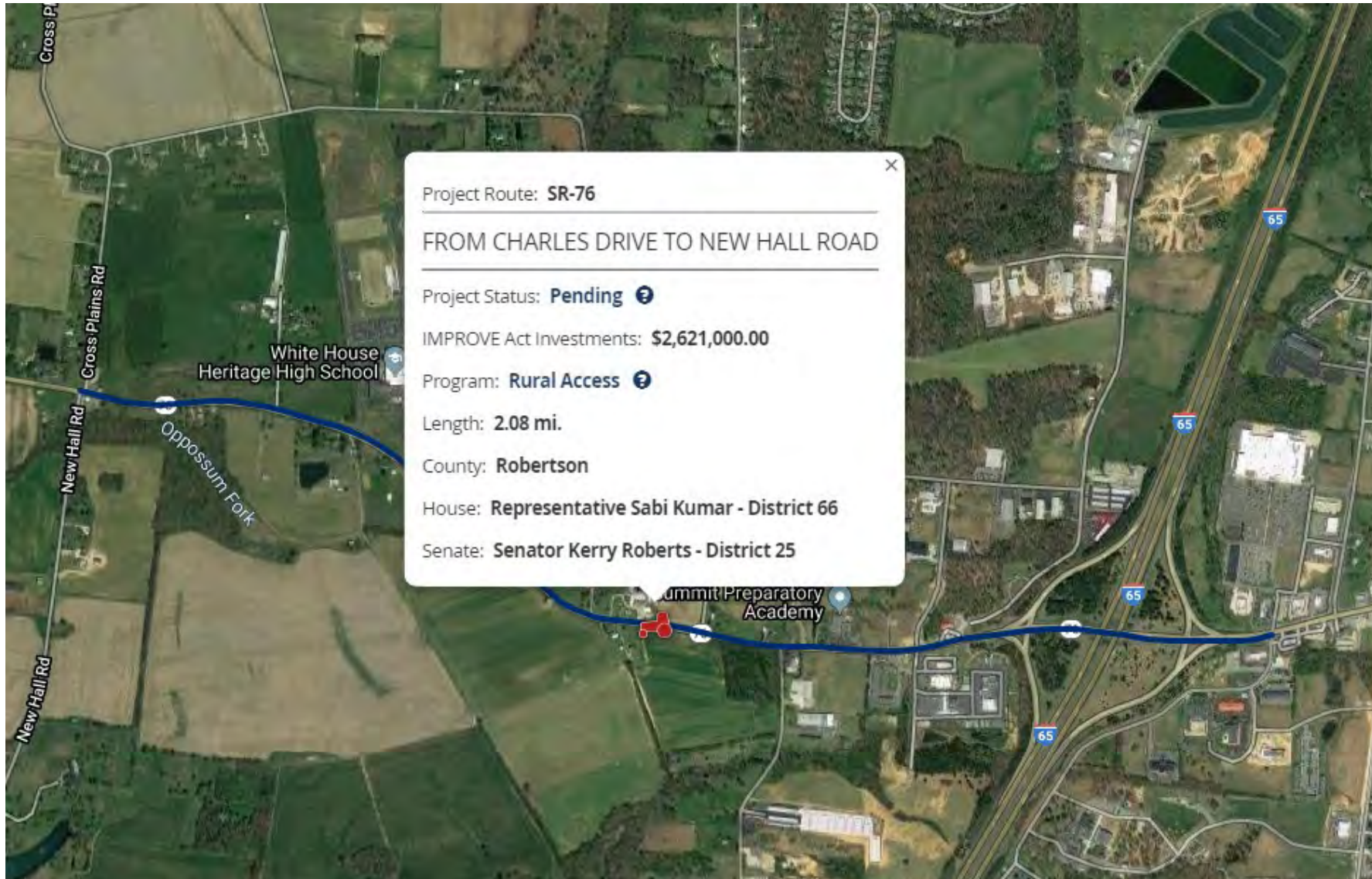
CITY OF WHITE HOUSE



IMPROVE ACT



CITY OF WHITE HOUSE



Project Route: **SR-76**

FROM CHARLES DRIVE TO NEW HALL ROAD

Project Status: **Pending** ⓘ

IMPROVE Act Investments: **\$2,621,000.00**

Program: **Rural Access** ⓘ

Length: **2.08 mi.**

County: **Robertson**

House: **Representative Sabi Kumar - District 66**

Senate: **Senator Kerry Roberts - District 25**

National Community Survey



CITY OF WHITE HOUSE

Community Livability	Future Importance	Current Quality
Overall Feeling of Safety	93	93
Overall Economic Health	89	80
Quality of the Utility Infrastructure	89	68
Overall Design of Residential & Commercial Areas	87	59
Quality of Natural Environment	84	85
Quality of Parks and Rec Opportunities	81	82
Health and Wellness Opportunities	78	68
Connection & Engagement with the Community	72	65
Opportunities for Education, Culture, Arts	69	50*
Quality of Transportation System (auto, bike, walk, bus)	61	46*

*** lower than benchmark**





Due to the size of this file, the notes are not attached at this time. If you would like to receive a copy of the notes that were presented with the presentation, please email Admin@WhiteHouseTN.gov requesting a copy. Thank you.