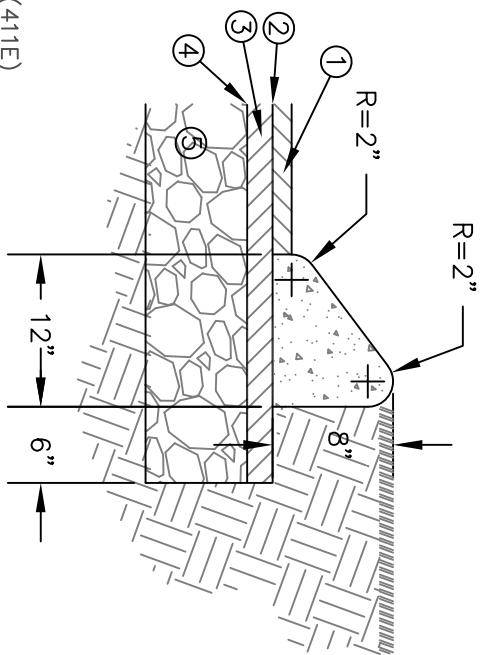


ROADWAY SECTION
NOT TO SCALE



- PAVING SCHEDULE:
- ① 1-1/2" ASPHALTIC CONCRETE SURFACE (411E)
 - ② TACK COAT (TRACKLESS TACK)
 - ③ 2" ASPHALTIC CONCRETE BASE (B-MODIFIED)
 - ④ PRIME COAT (RS-2)
 - ⑤ 8" STONE (GRADING D PUG MILL MIX)

PAVEMENT COURSES
NOT TO SCALE

- NOTES:
- 1. 25' PAVEMENT REQUIRED FOR STREET WITH 2000 OR LESS ADT.
 - 2. 27' PAVEMENT REQUIRED FOR STREET WITH 2000 OR MORE ADT.
 - 3. SIDEWALK REQUIRED ON BOTH SIDES OF STREET (SEE SD-115).
 - 2. 4:1 SLOPE REQUIRED ON BACK ROW.



CITY OF WHITEHOUSE – PUBLIC WORKS
LOW AND MEDIUM DENSITY
URBAN RESIDENTIAL COLLECTOR STREET

REVISION No.: 1
DATE APRIL 2017

SD-103