

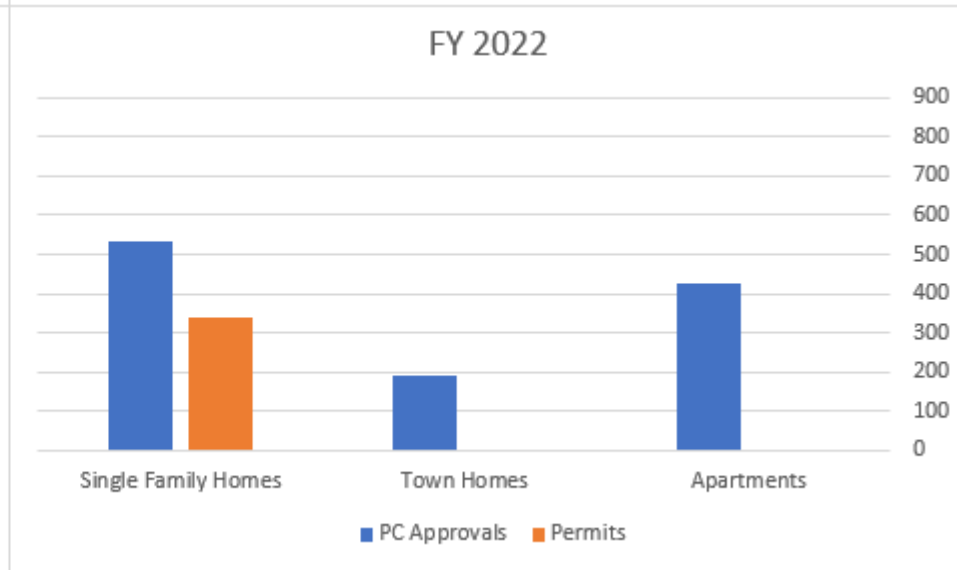
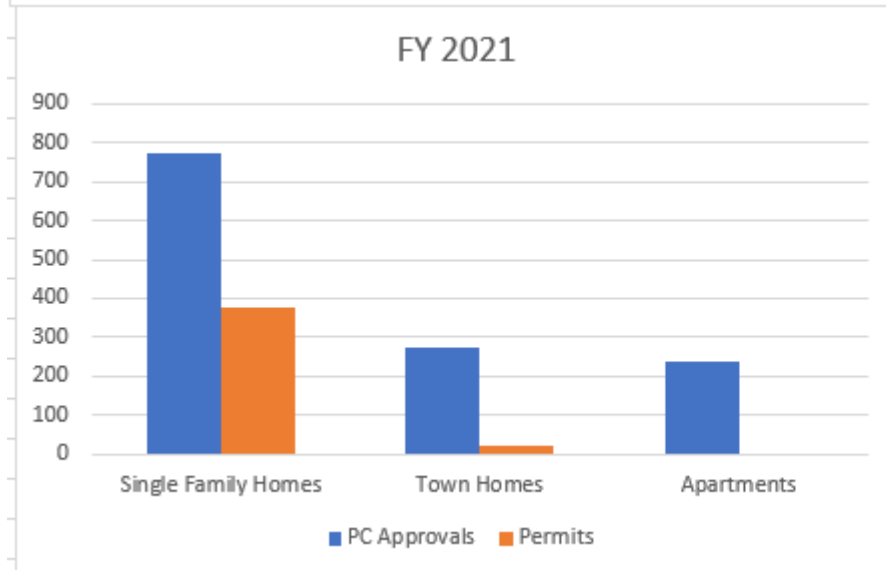
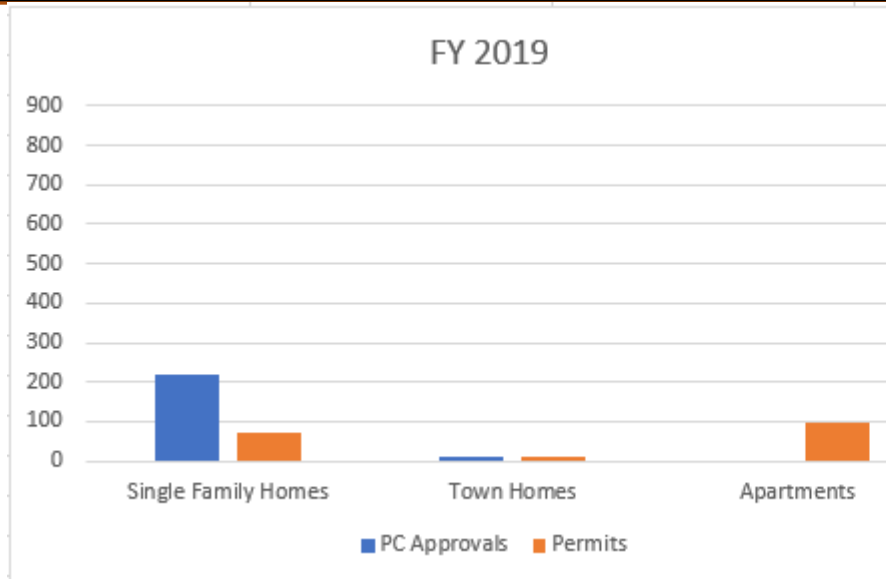


# CITY UPDATE

---

GERALD HERMAN  
CITY ADMINISTRATOR

# RESIDENTIAL GROWTH



# COMMERCIAL GROWTH

**CALIBER  
COLLISION**



**DUNGEONS AND  
DRAGONS  
GAMING SPACE**



# INDUSTRIAL GROWTH



**TATE ORNAMENTAL**



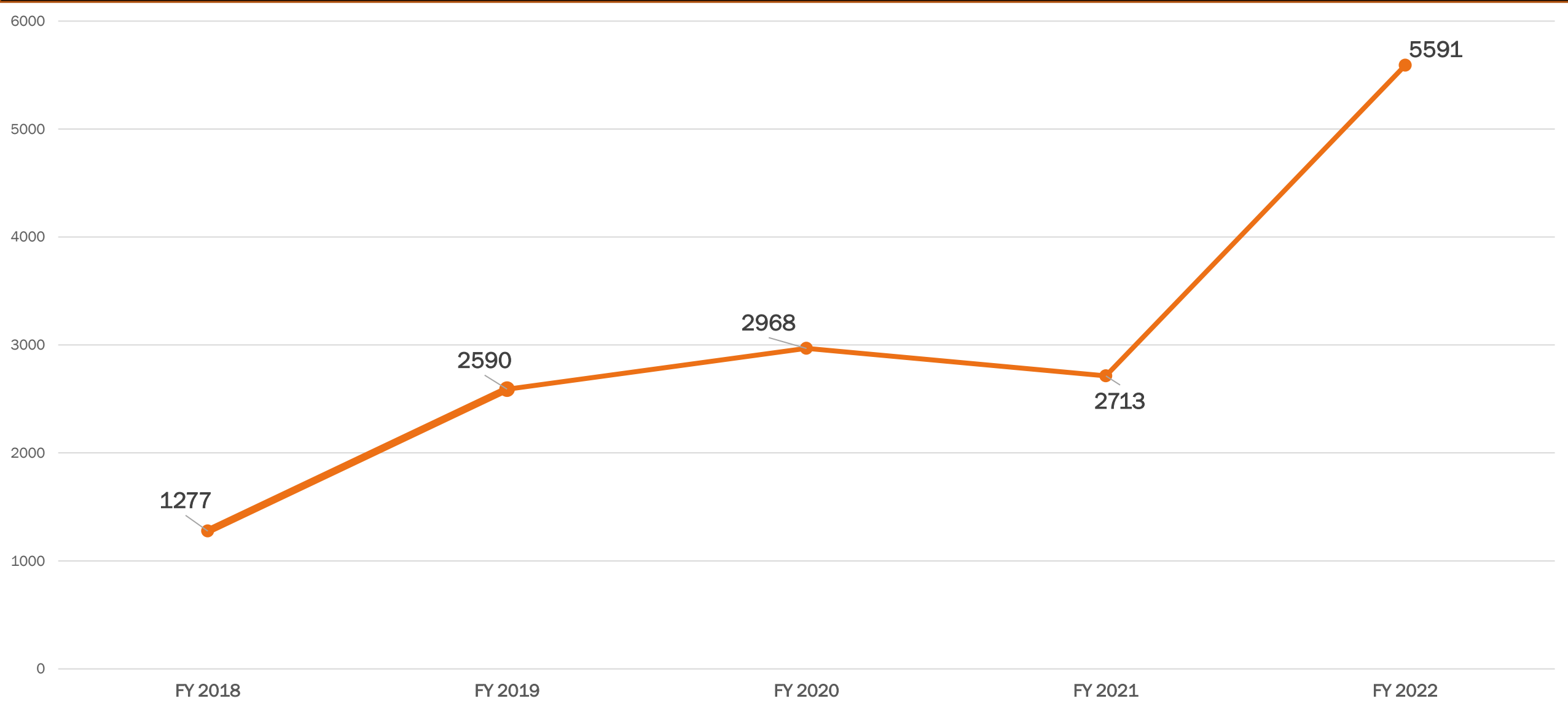
**ADVANEX**  
ADVANEX AMERICAS, INC.



## Union Springs Industrial Park



# BUILDING INSPECTIONS



# GIS IMPROVEMENTS

## Development Tracker Commercial & Residential (commercial counts, are projects that have been before Planning Commission)

- Advanex
- Auto Zone
- Caliber Collision
- Exotic Marble & Granite
- Fast Pace Urgent Care
- Firestone
- Holy Ground Coffee
- Hope Center
- Kroger Store Expansion

◀ 1 of 21 ▶

Development Description	Kroger Store Expansion
PC Approval	10/19/2015, 7:00 PM
Address	Hwy 76/Byrum Drive
County	Robertson
Project Type	Commercial
Status	Under Construction
Square Footage	36,150
Completed SF	0
Completed MF	0
Remaining SF	0
Remaining MF	0
Current Status	
Construction Plan Review	



- Beech Grove Townhomes
- Bridle Creek
- Brookside Villages
- Calista Farms
- Cambria
- Cardinal Point
- Collins Crossings Calista Road
- Concord Springs
- Copes Crossing

◀ 1 of 34 ▶

Development Description	Fields at Oak Wood
PC Approval	2/28/2018, 6:00 PM
Address	Calista Road/96, Parcels 35-38
County	Robertson
Project Type	Single Family
Current Status	Phase 1 Under Construction
Total Units Approved	234
Single Family Units	234
Multi Family Units	0
Remaining SF	174
Remaining MF	0
Completed Units	60



Tennessee STS GIS, Esri, HERE, Garmin, GeoTechnologies, Inc., USGS, EPA | Esri, HERE and DeLorme  
 Powered by Esri

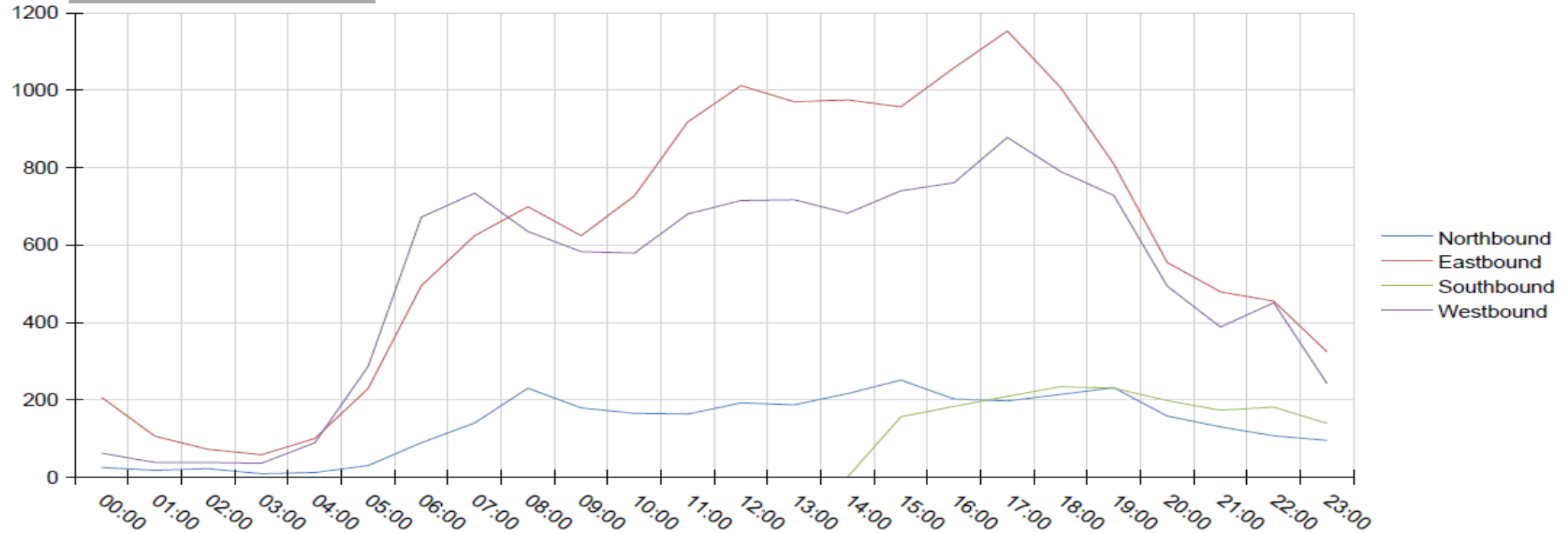
# TRANSPORTATION

## GRIDSMART<sup>®</sup>

### Volume Report - Sum

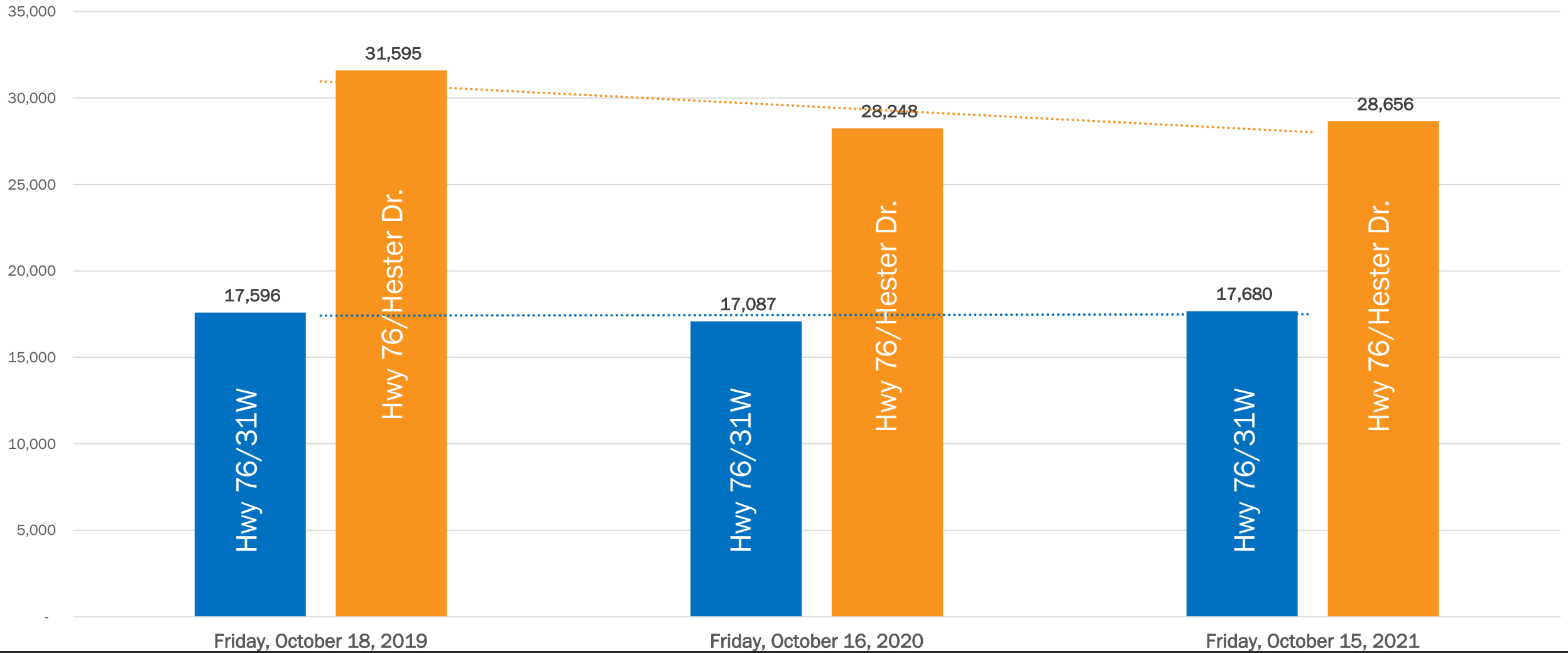
Intersection Hwy 76 & Hester Dr.  
Date 10/18/2019

	Total
Northbound	3262
Eastbound	14612
Southbound	1703
Westbound	12018
<b>Total</b>	<b>31595</b>



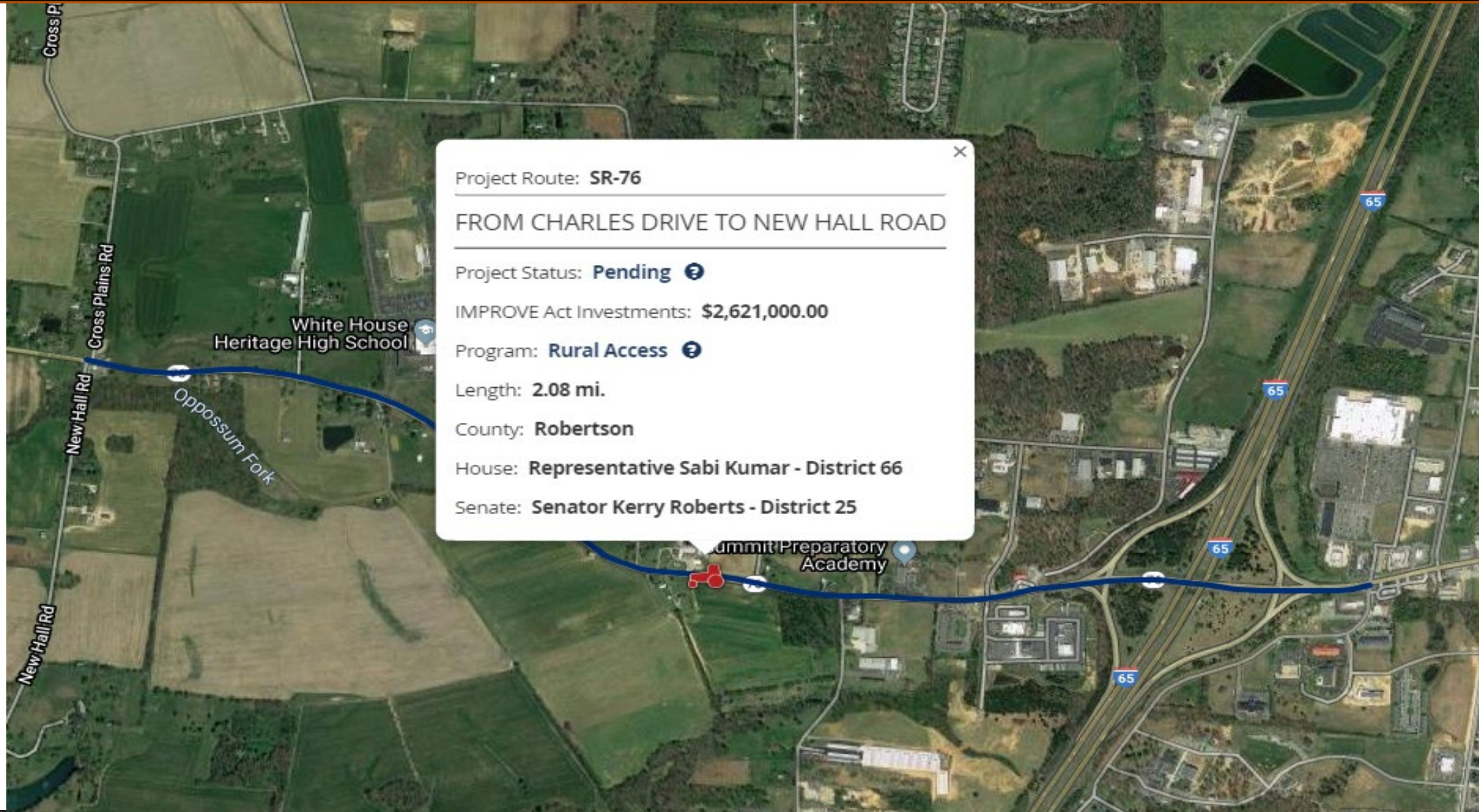
# TRANSPORTATION

## Gridsmart Traffic Count



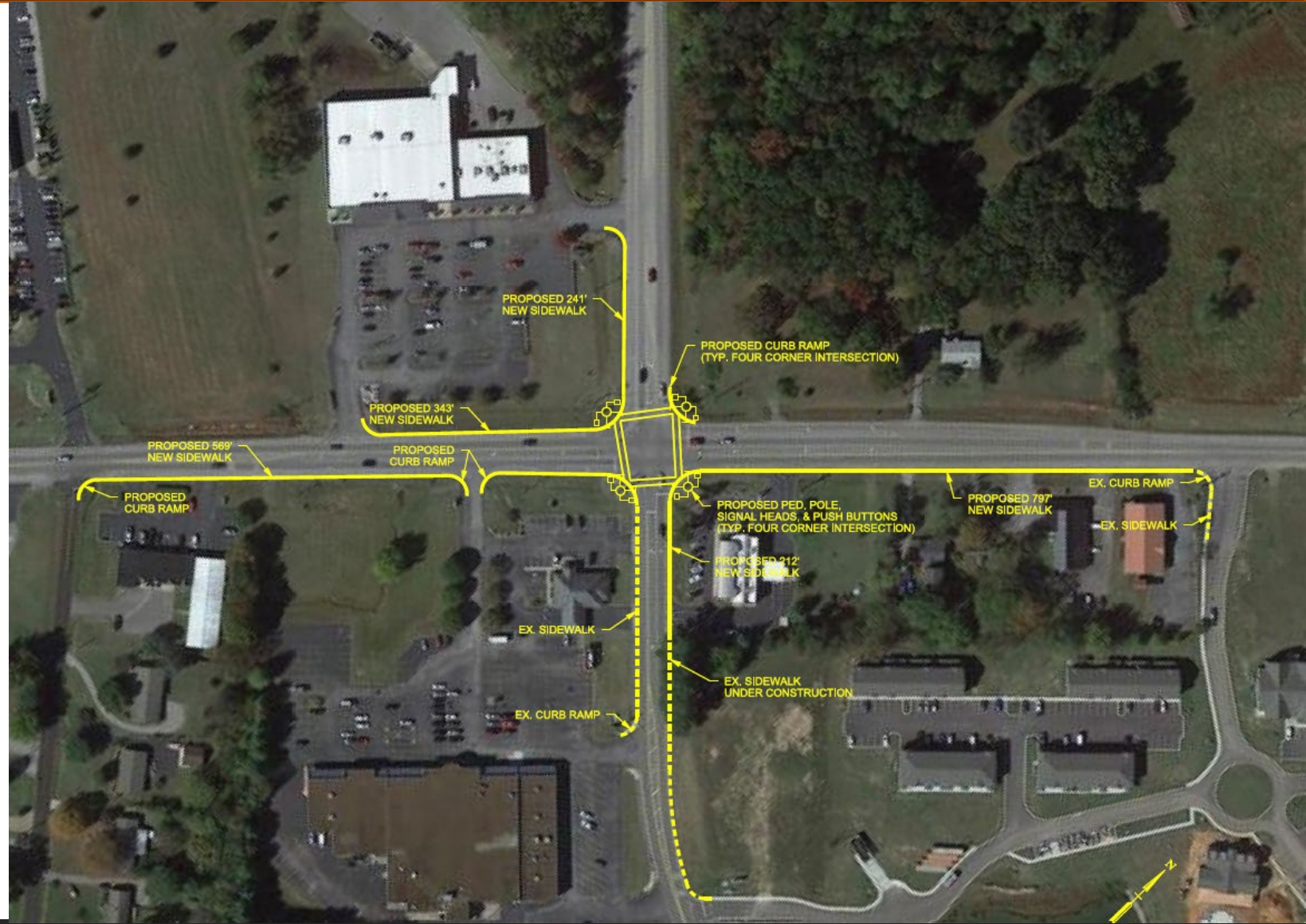


# TRANSPORTATION



# TRANSPORTATION

## Intersection Improvements at US 31W/Raymond Hirsh Parkway



# TRANSPORTATION



State  
Industrial  
Access  
Grant

NOTES:

1. EXISTING DRIVEWAY FROM HESTER DRIVE TO BEGINNING OF NEW CONSTRUCTION BEING CONVERTED TO SIA ROAD WILL NEED PAVEMENT ANALYSIS TO DETERMINE IF FEASIBLE FOR NEW TRUCK TRAFFIC.
2. RIGHT OF WAY SHOWN IS ESTIMATED AND SUBJECT TO CHANGE UPON FURTHER PROJECT DEVELOPMENT.

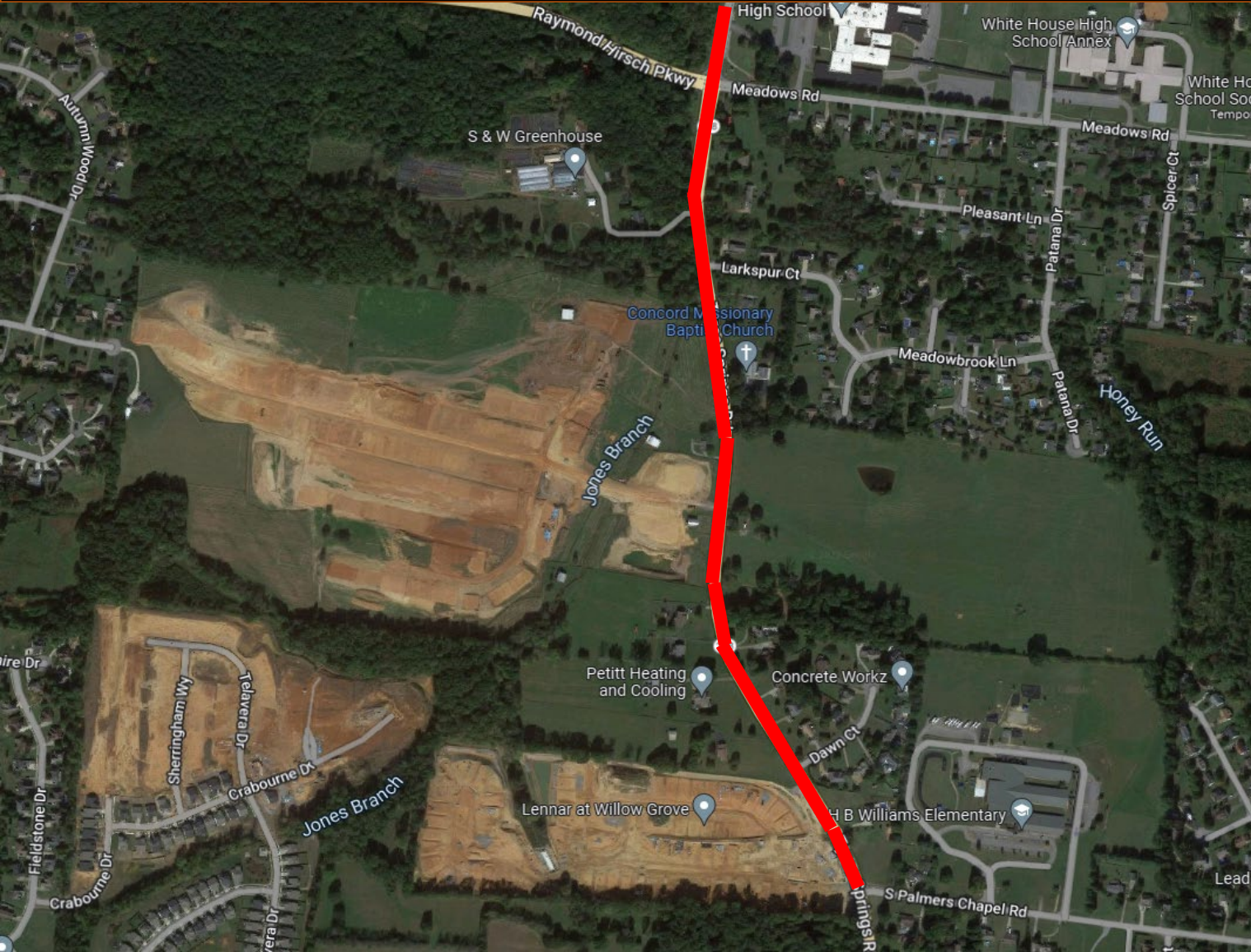
TVA TRANSMISSION LINES

# TRANSPORTATION

## 31W / SAGE / MCCURDY INTERSECTION



# TRANSPORTATION



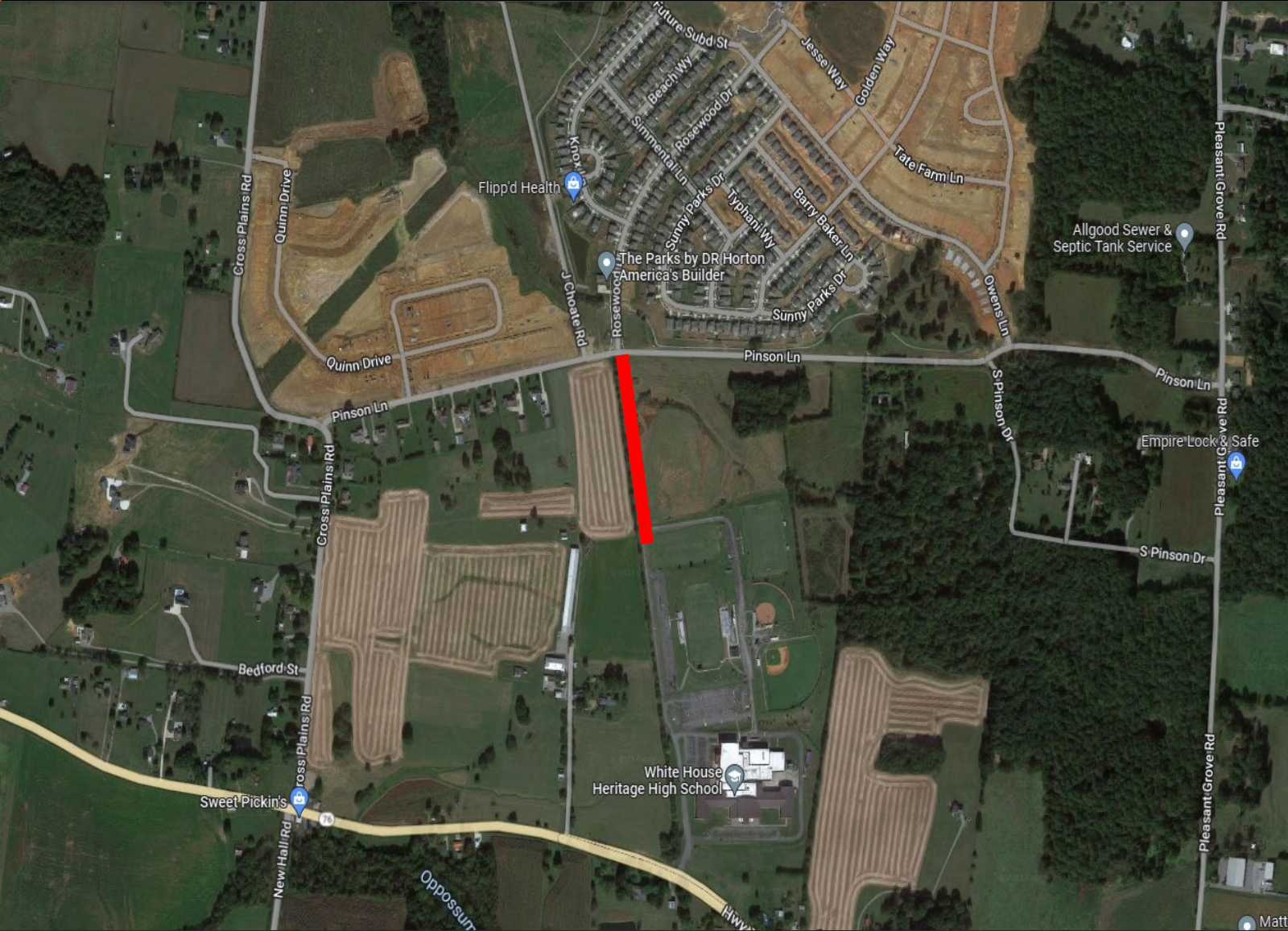
## Tyree Springs Road Improvements

# TRANSPORTATION

## Sage Road Widening



# TRANSPORTATION



**Pinson Lane  
Connector to  
Heritage High School**

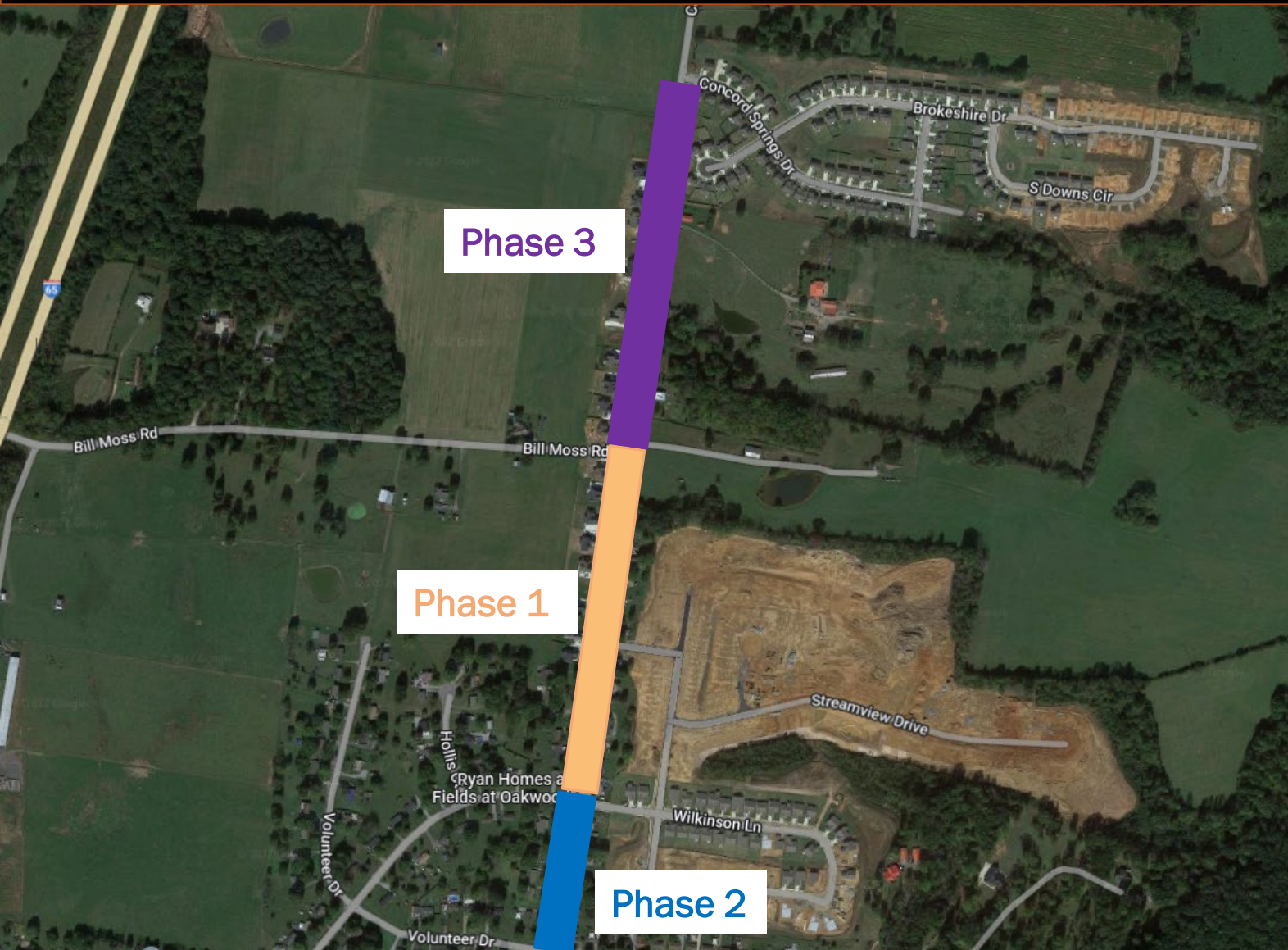
# TRANSPORTATION

## North Palmers Chapel Road Widening





# TRANSPORTATION



## Calista Road Improvements

# UTILITIES



WHITE HOUSE  
UTILITY DISTRICT



Piedmont  
Natural Gas



CUMBERLAND  
**CONNECT**

powered by **CEMC**



COMCAST

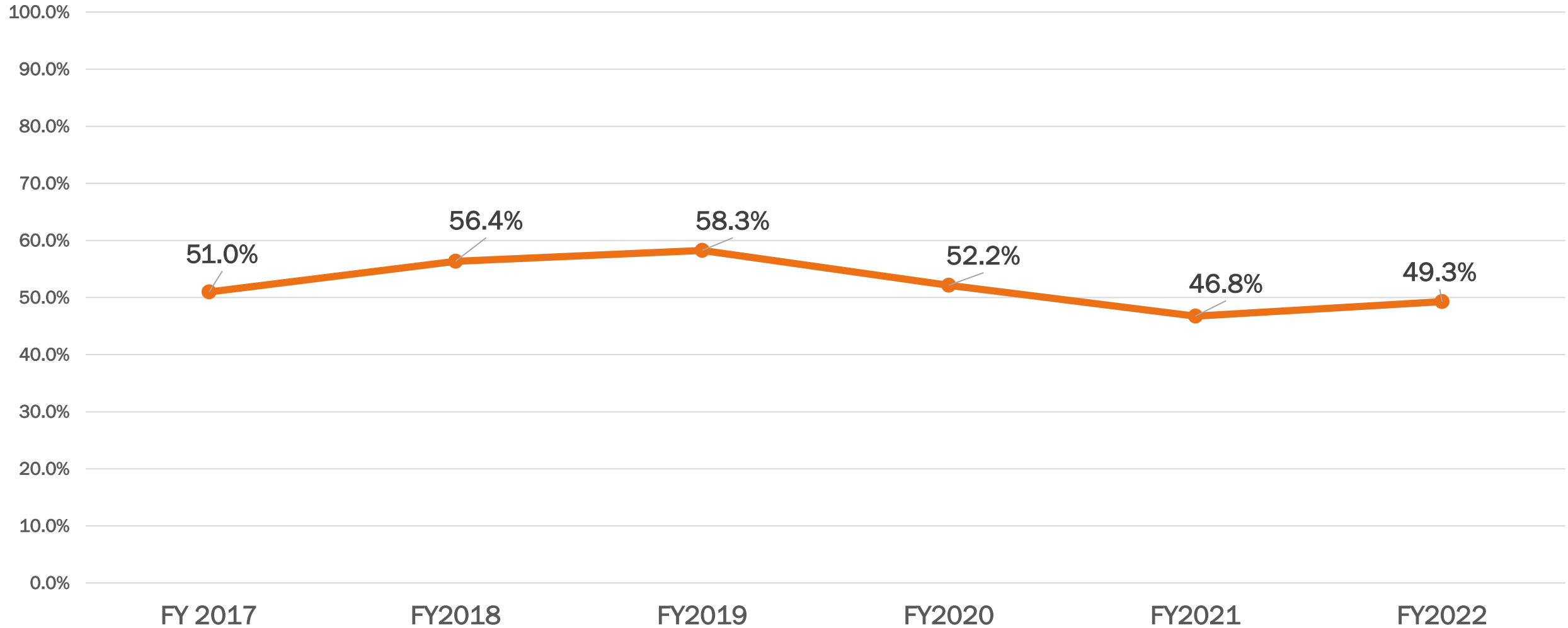
xfinity



at&t

# UTILITIES

## % of Wastewater Plant Throughput

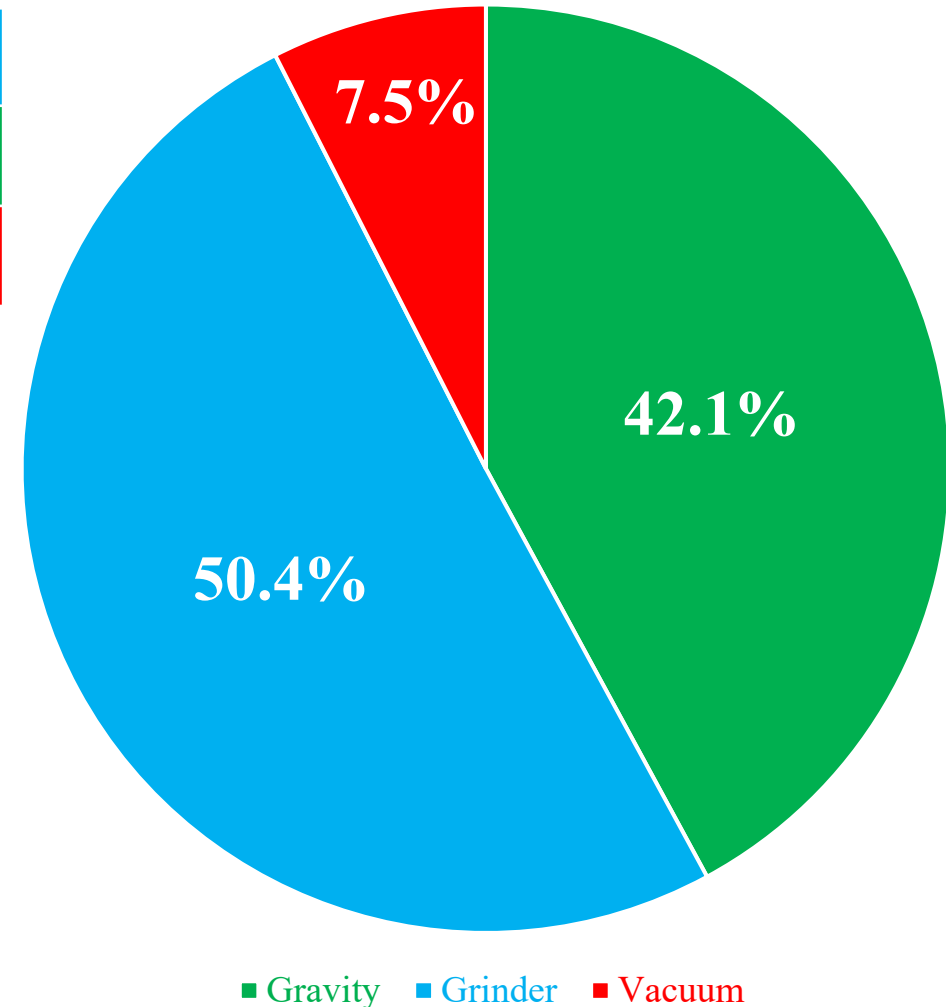


# UTILITIES

Gravity Sewer Connections	2,492
Low-Pressure Grinder Sewer Connections	2,984
Vacuum Sewer Connections	444

**Total Customers: 5,920**

Sewer Service Types

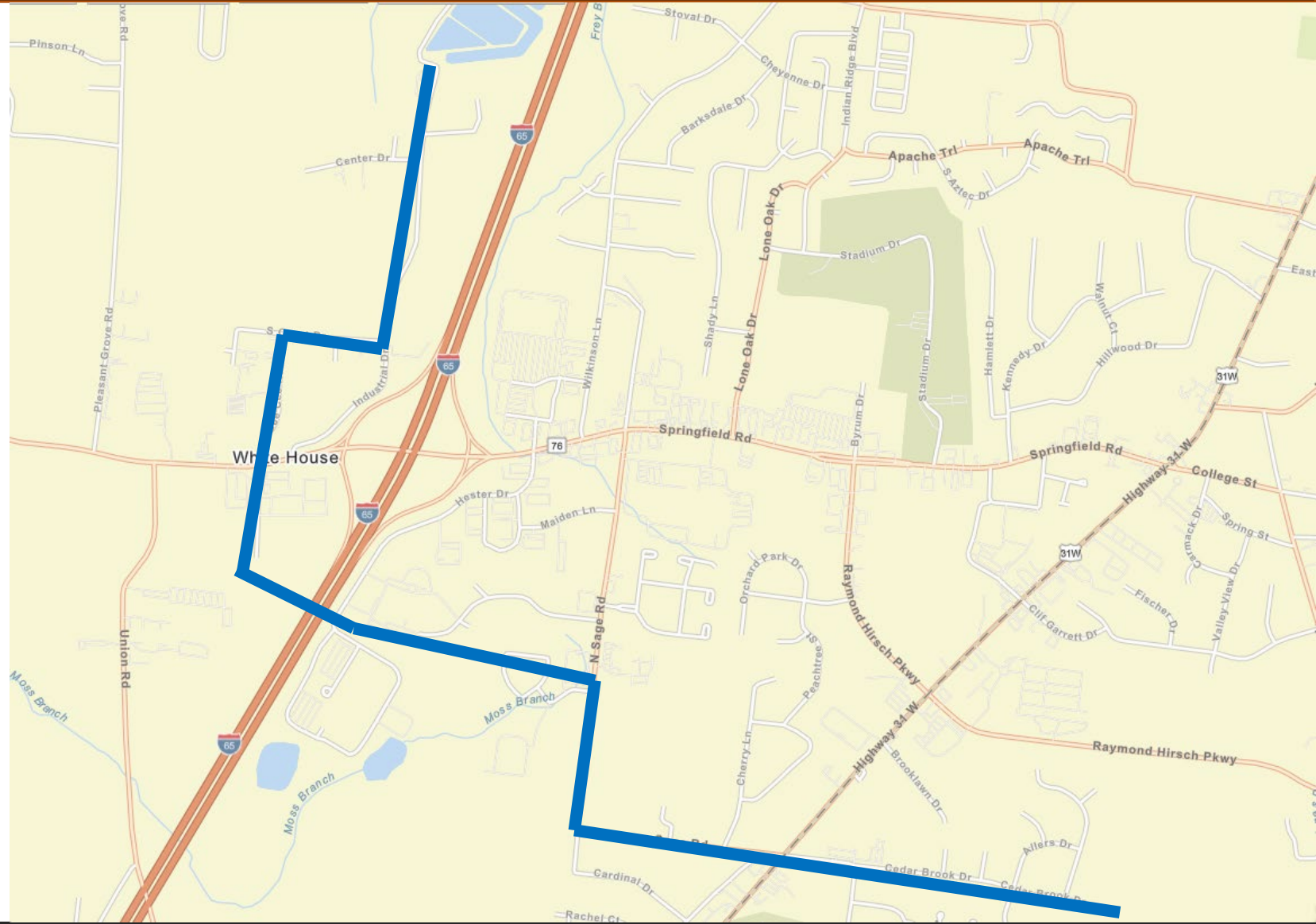
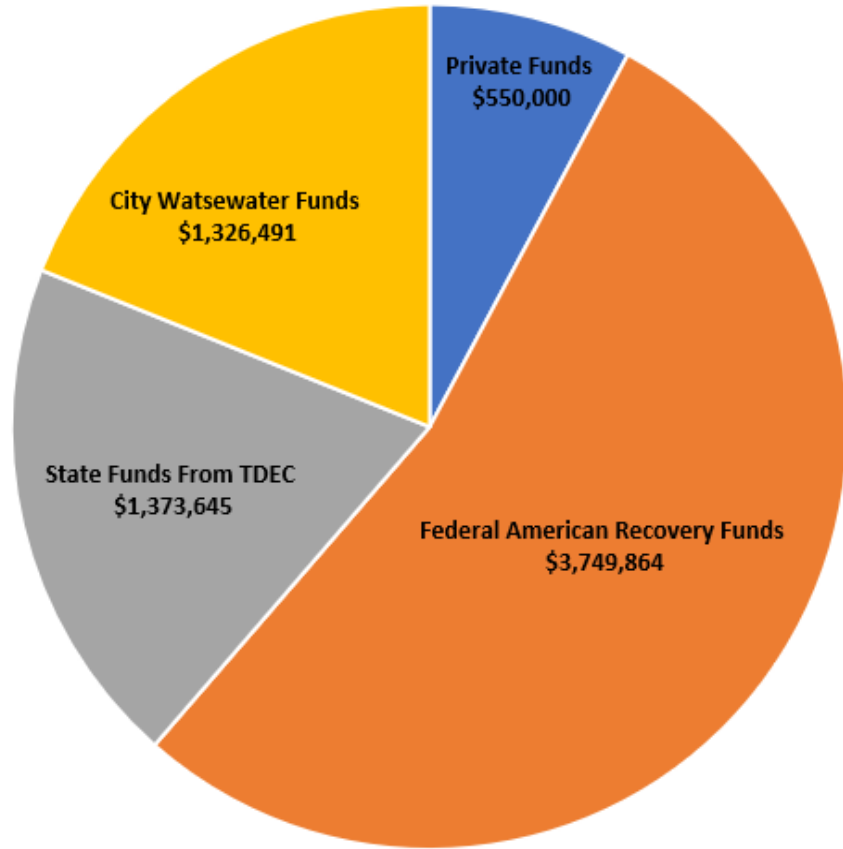


# UTILITIES



# UTILITIES

## Southern Force Main \$7 Million Estimated



# UTILITIES

BEFORE



AFTER

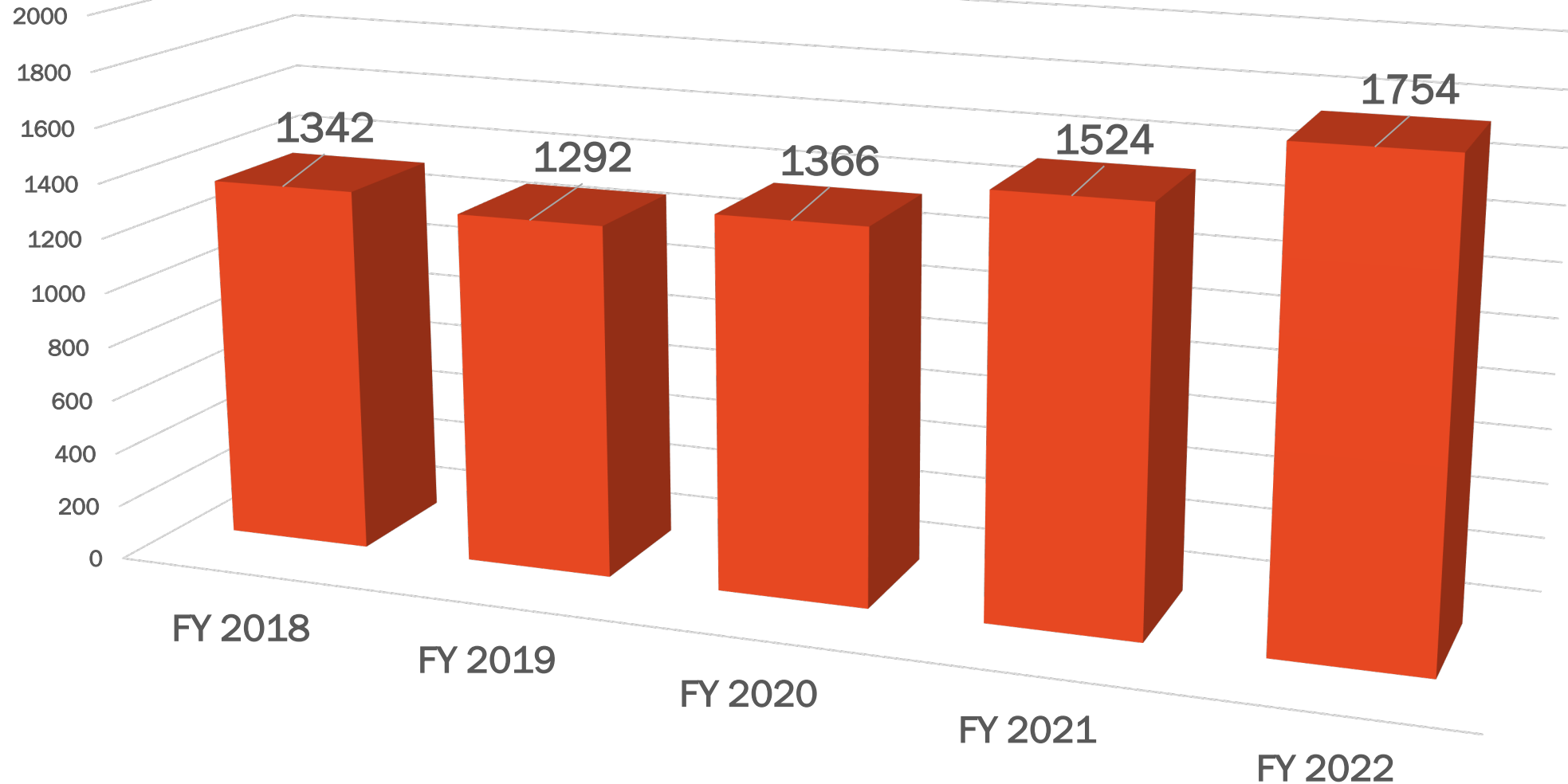


New Development Inspections



# PUBLIC SAFETY

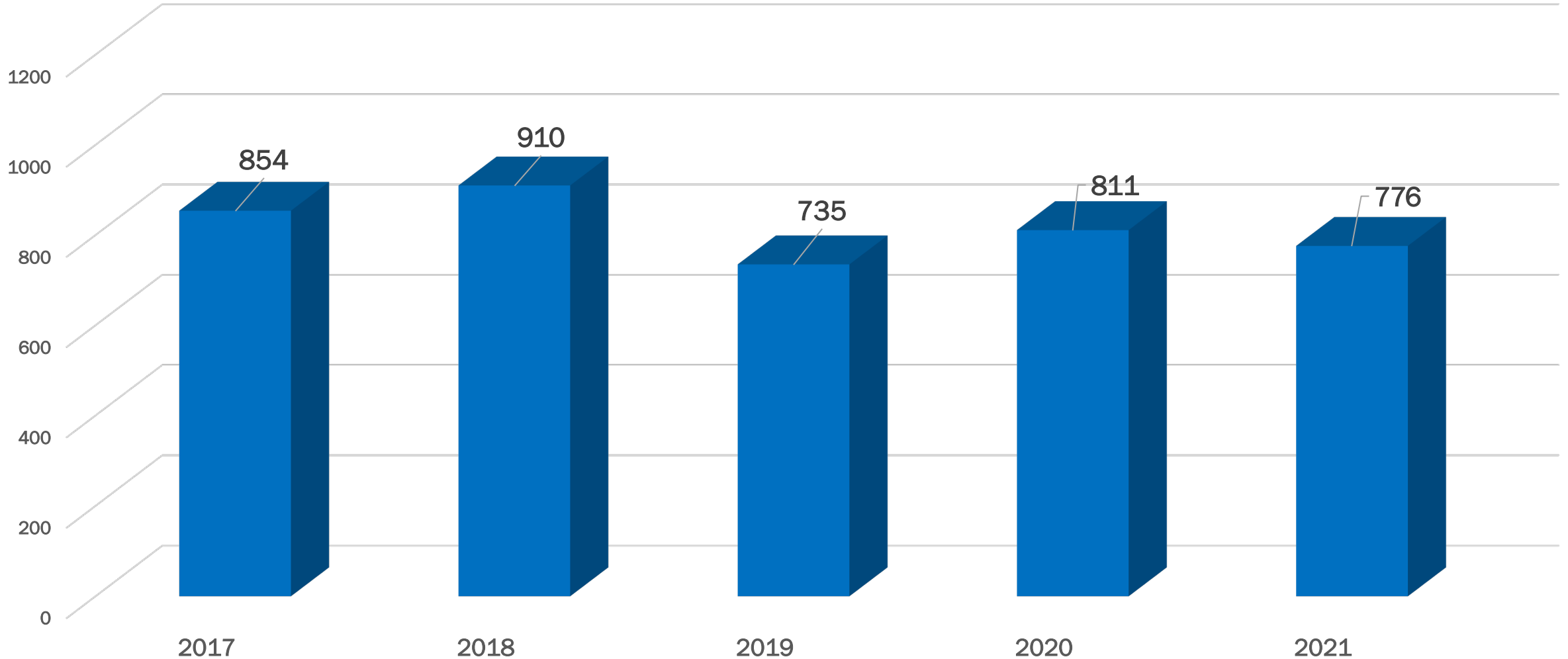
## Total Fire Calls Per Fiscal Year





# PUBLIC SAFETY

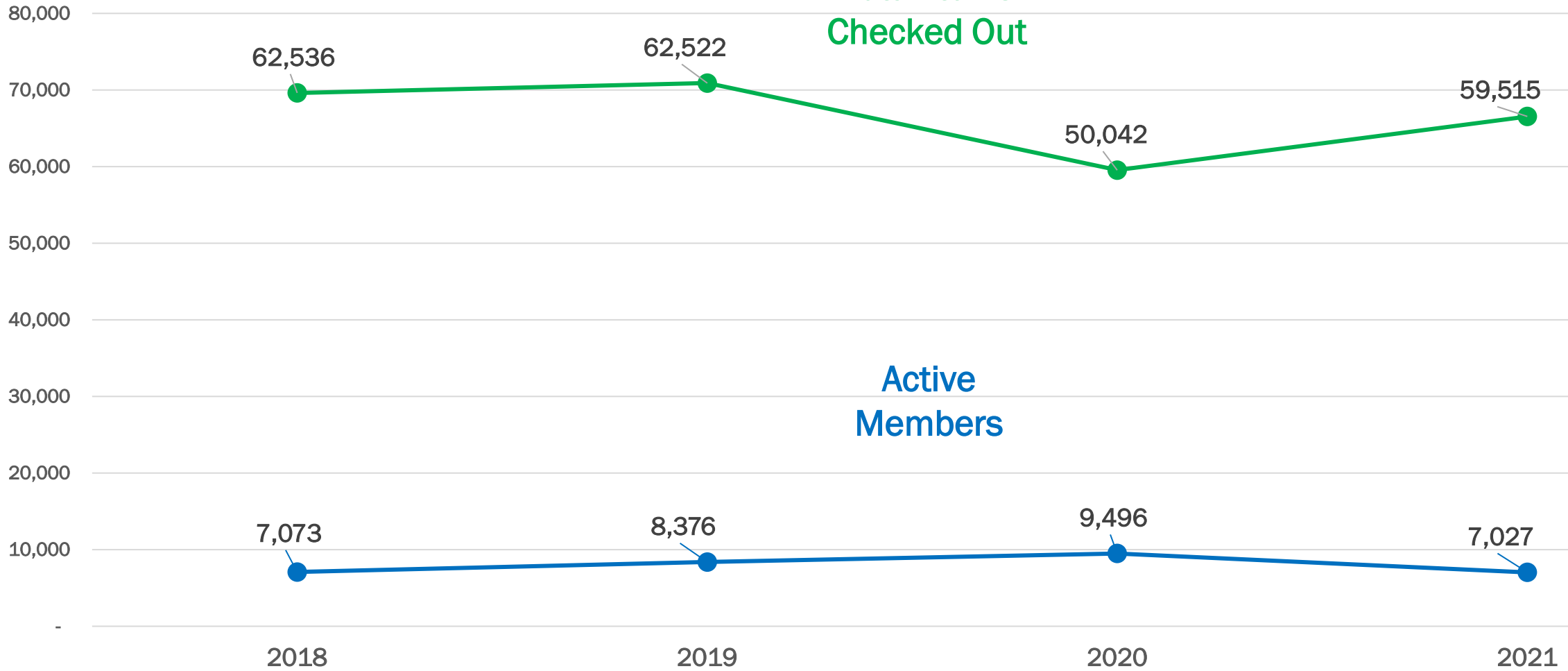
## Police Crimes Against Persons and Property Reported



# LIBRARY

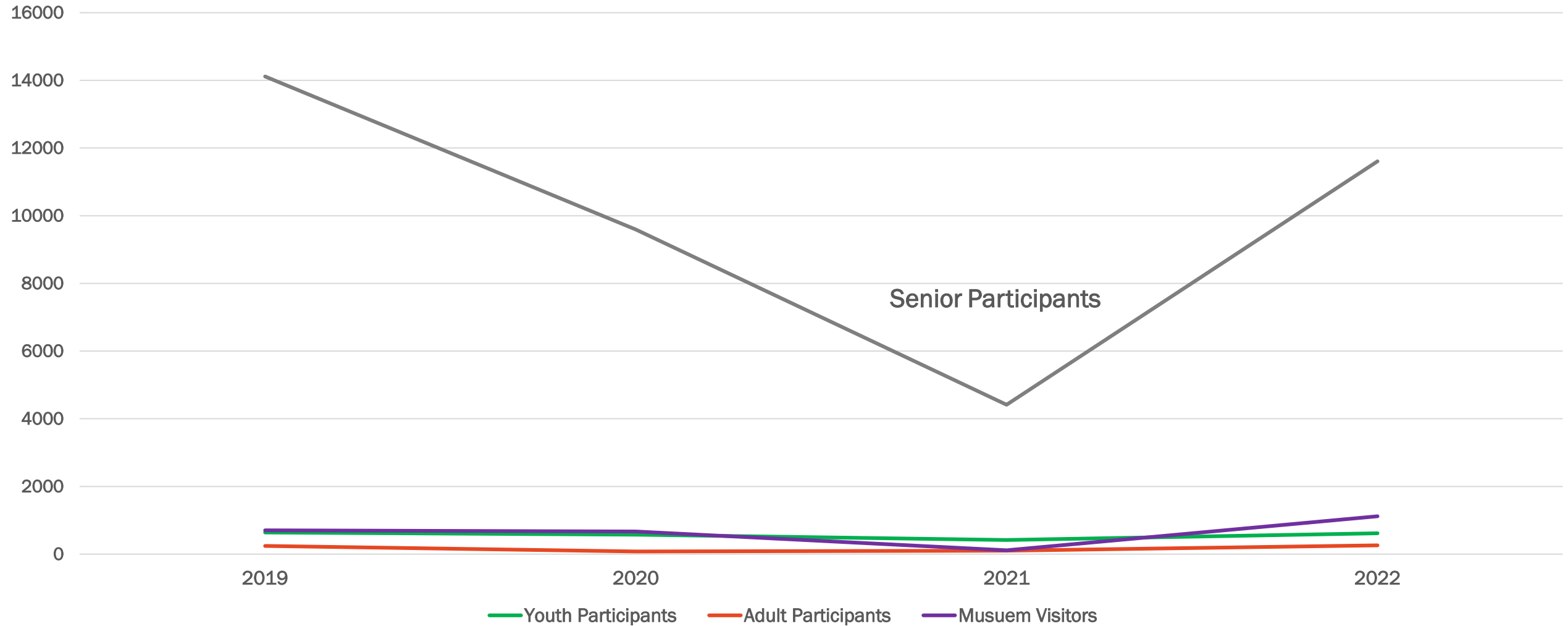
Total Items  
Checked Out

Active  
Members



# RECREATION

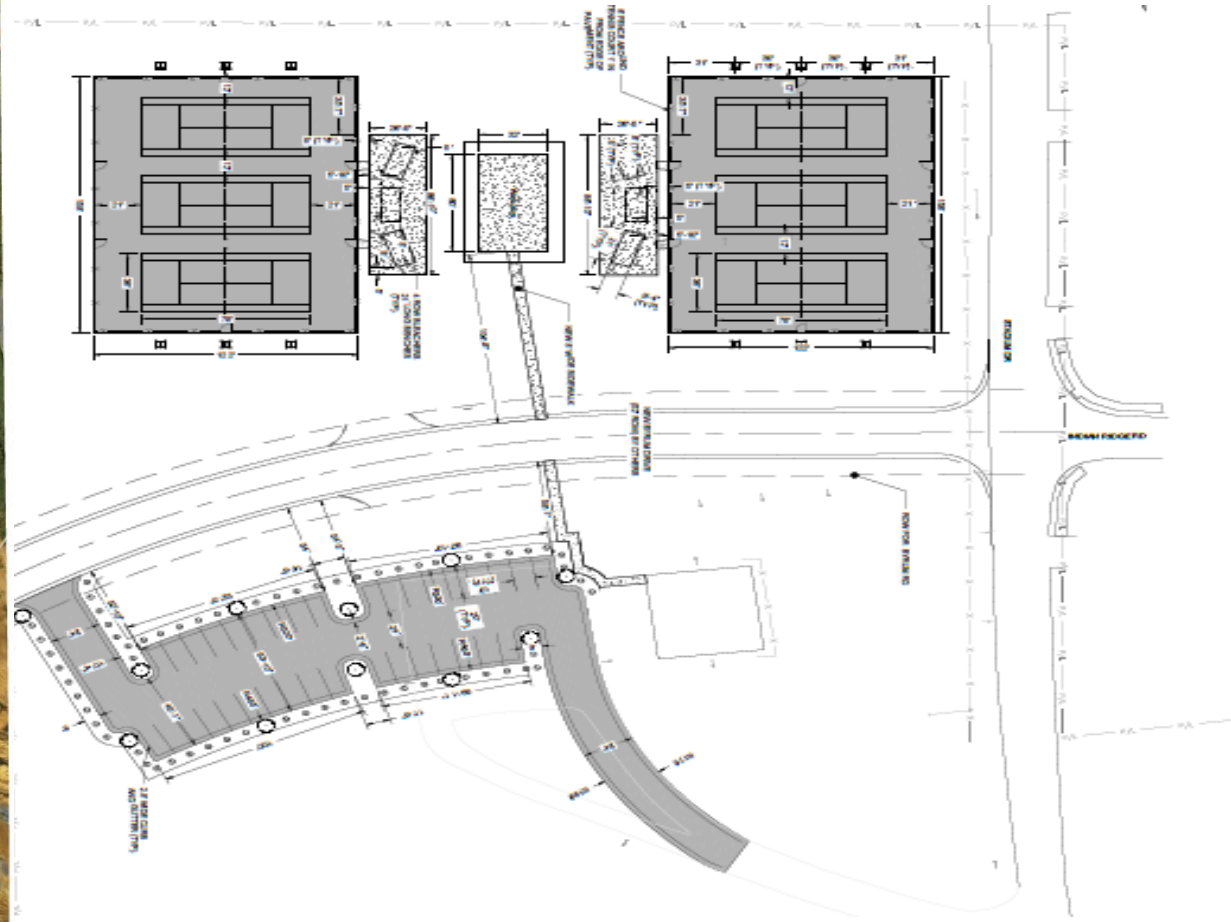
Participants in City Recreation Programs



# RECREATION



## TENNIS COURTS



# RECREATION



**SOCCER  
COMPLEX**



# RECREATION CENTER



## BUILDING FEATURES

Two Stories  
70,800 square feet

Fitness Center  
Game Room  
(3) Multipurpose Rooms  
Kids Camp

860 Bleacher Seats  
(3) Full Size Basketball Courts  
(1) Half Size Basketball Court  
(4) Volleyball Courts  
(2) Pickleball Courts

Locker Rooms  
Walking/Running Track  
Concession Stand  
Warming Kitchen

# HUMAN RESOURCES

---



**NOW  
HIRING**

**APPLY NOW!**

*Competitive Pay*

*4 Weeks of Vacation @ Start*

**Great Benefits**

**Find More Information At:**

**[WhiteHouseTN.gov/Careers](http://WhiteHouseTN.gov/Careers)**

---

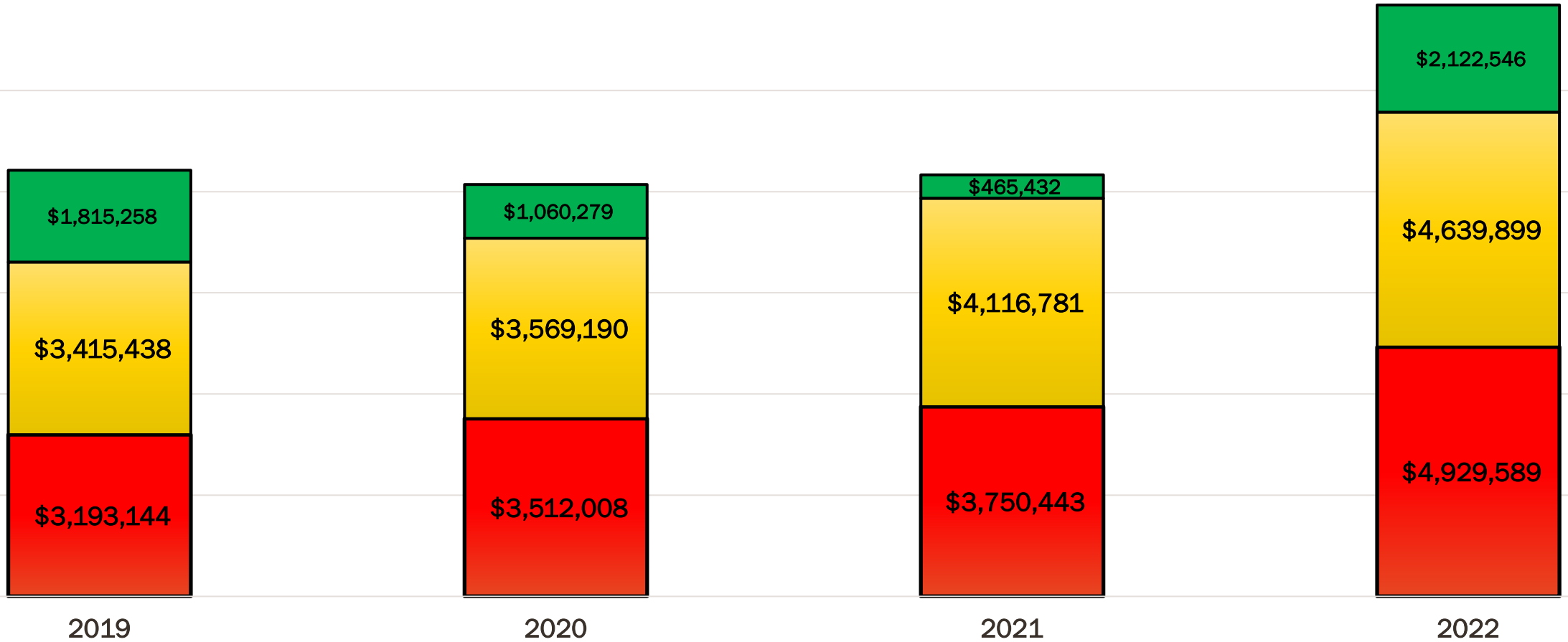


# FINANCIALS

■ Property Taxes

■ Sales Taxes

■ Grants & Donations

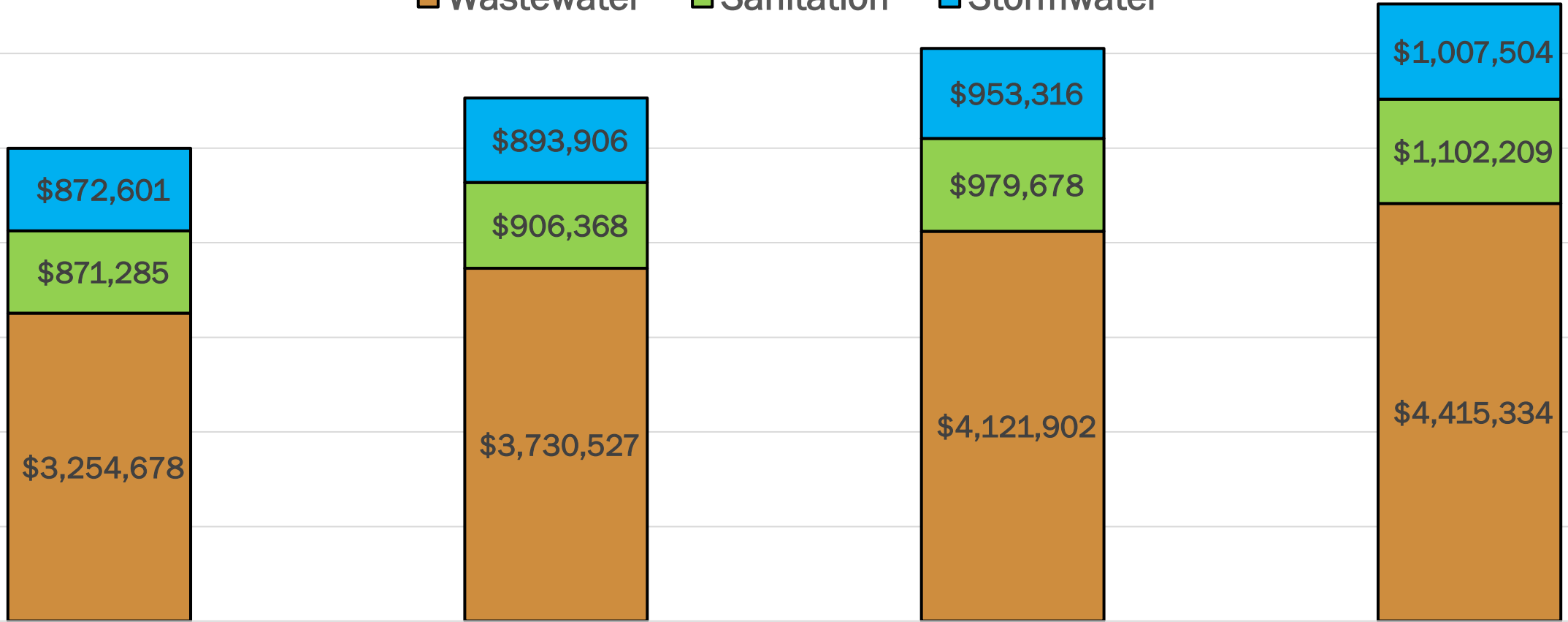




# FINANCIALS

## UTILITY FEES

■ Wastewater   ■ Sanitation   ■ Stormwater



2019

2020

2021

2022

# FINANCIALS

How much of operating income was used to pay debt in 2022?

General  
Fund

**11.9%**

Wastewater  
Enterprise Fund

**11.6%**

VIDEO



**QUESTIONS?**